

Parkheath

Sold on Service

Sumatra Road NW6

£2,400 PCM (£554 per week) - Camden Band D



Spacious 2 double bedroom apartment
2nd floor (entrance on first floor)
Superb reception/dining room with wooden floors
2 bathrooms
Walking distance to West Hampstead transport facilities


908 Sq Ft / 84.4 Sq M
Plenty of natural light
Large open plan fitted kitchen
Surrounded by excellent local amenities
EPC rating C / Council tax: Camden (band D)

West Hampstead Office 020 7794 7111

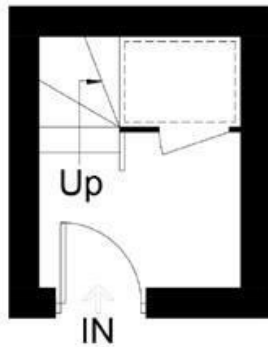
Sumatra Road

Approximate Gross Internal Area = 84.4 sq m / 908 sq ft
(Excluding Void)

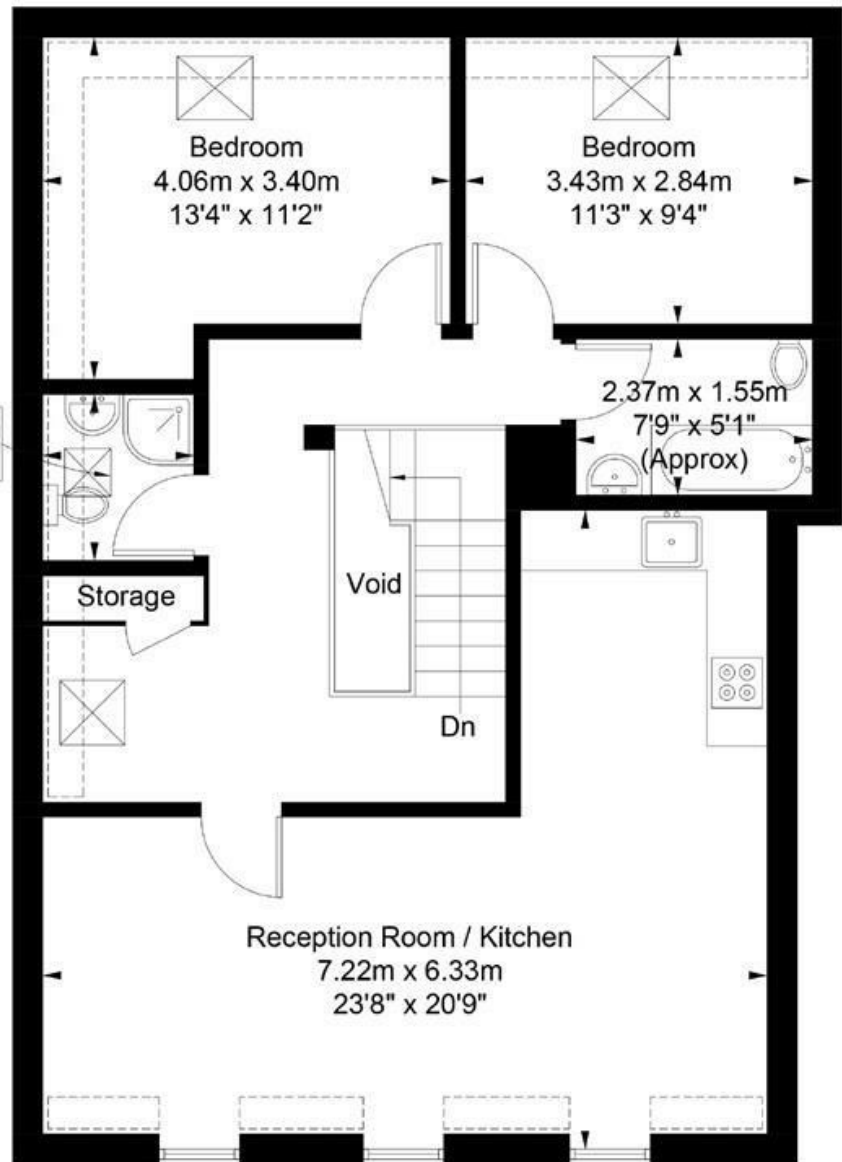


 = Reduced headroom
below 1.5m / 5'0"

1.67m x 1.50m
5'6" x 4'11"



First Floor



Second Floor

Illustration for identification purposes only, measurements are approximate,
not to scale. FloorplansUsketch.com © 2019 (ID532017)
ELLIE CLAIRE PHOTOGRAPHY LTD

The particulars do not constitute part of an offer or contract. The particulars, including text, photographs and plans, are for the guidance only of prospective purchasers/tenants and must not be relied upon as statements of fact. The descriptions provided therein represent the opinion of the author and whilst given in good faith should not be construed as statements of fact. Nothing in these particulars shall be deemed a statement that the property is in good condition or otherwise or that any services or facilities are in good working order. All measurements are approximate